



The PRESQUE ISLE PROSPECTOR



Official Publication of the Gem City Rock and Mineral Society
Monthly Meetings, First Friday at 7:30 PM



July 2006

Last Month's Meeting:

Last month we finally had our program on Tumbling, and not only did Bob Gallivan bring in a rotary and a vibrating tumbler to show us how to load it and what the proportions should look like, but a few others of us brought in our own tumblers so he could show us what they should look / sound like too. So now that we know everything, I'm sure we all ran home to plug them in and instantly turn out scads of perfectly polished tumbled stones (I know I did). And now that we've had a few weeks to actually wrestle with the darn things, I know I at least have just a few more questions! See the article later on in the newsletter.

This Month's Meeting:

This month our meeting will be Saturday, July 8th (skipping the Fourth of July Weekend), at 9:30AM, and Bob will be answering more tumbling questions. If you have something specific to ask about your tumbler, bring it along.

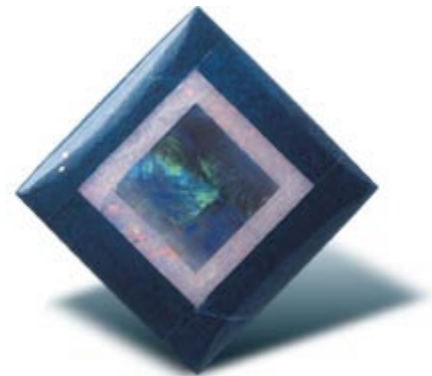
We will also be putting together a club order for grit, since there's nowhere local to get it without paying an arm and a leg and bulk orders are *lots* cheaper. So think about how much tumbling you think you might like to do, and what size / type of tumbler you have, and then once Bob helps us figure out how much grit to use, you can figure out how much to order.

Of course, the other big item on the agenda is the Gem Show, only a week after the meeting – so we'll be finalizing plans and signing up for work hours and the usual. Remember, most of the stations we need to cover require a warm body more than any skill, and most of us can commit to a one-hour time slot here and there, so please sign up!

Major Fall Project:

Our fall project will be a simple intarsia, a center stone with a square or rectangular frame – something like this, but probably *not opal* for a first project! You will need a center focal piece, something with a pattern probably, like the agates / jaspers below, and then one or two stones to frame it with, preferably of similar hardness.

Since the frame will take very little stone, we might want to have a "slab swap" or maybe even a "strip swap" so that we can see a greater variety and maybe share out the cost of material for the border pieces, which will be less patterned and more a solid color. So look through your slabs and **bring along** any of solid-color material, like aventurine or lapis or rose quartz or any plain jasper or agate or anything else, and determine what value you'd place on a few strips of it for trading. We'll probably want to have a survey session at the meeting before shopping at the show, and save the actual swapping until after the show when we have our focal pieces.



Club Web Site address:

<http://www.treebeard.net/gemcity/index.htm>

President	Kirk McFadden	P.O. Box 128	Waterford PA 16441-0128
Vice-president	Sarah Boesch	1223 Lake St.	Lake City PA 16423-1808
Secretary	Harriet Beckman	2239 South Shore Dr.	Erie PA 16505-2154
Treasurer	Val Engelleiter	132 Moorehead St.	Erie PA 16508-1859
Newsletter Editor	Harriet Beckman	email:	gemcity@treebeard.net
Board Members:	Robert Gallivan		Robert Perry

(814) 602-5225
(814) 774-4234
(814) 455-4851
(814) 454-1771
(814) 455-4851
Mary Thomson

Changes to Club By-Laws:

The proposed changes to the club By-Laws were passed at the June meeting.

The changes are mainly that we have had to raise club dues – but since we haven't had a raise in at least 20 years, perhaps that's not too bad! The new dues rates would raise an individual annual membership from \$10 to \$15, a couple or parent and one child from \$15 to \$20, a junior or student from \$5 to \$10, and a family from \$20 to \$25. This is still a very good deal!

Other changes are the formal removal of the 50¢ work session charge that we have already done away with, and a suggestion that we should have a formal permission slip / liability release for any junior member accompanied by a senior member not their parent or guardian on a club field trip.

Federation News:

Both the Eastern Federation and the American Federation newsletters have the rest of the summer off, but you can still go to the web sites and see past newsletters of the Eastern Federation at <http://www.amfed.org/efmls/newsletters.htm> and the American Federation http://www.amfed.org/afms_news.htm .

Don't forget that the AFMS national convention this year is in Nashville, TN, August 16-20.

Harriet's Adventures in Tumbling:

I've had a 10-pound-size vibrating tumbler that I got quite a few years ago, but had never been out of the box until last month's program on tumbling – I brought it along and set it up, and Bob showed us what an appropriate load would be (which turns out to be almost anything from enough to cover the bottom of the bowl to almost up to the rim, with a vibrating tumbler), and more importantly, how much water to add (which turns out to be not much at all – enough to keep the load wet, and not much more! No puddles in the bottom!). This was great info, since I had only run a rotating tumbler before, and that only a couple of weeks on rough grit. This was also great because Mary has a similar tumbler, and was having a lot of trouble with it – turns out the instructions she had were for a rotating tumbler, and that's a completely different animal!

So, now that Bob told us all about it, and we're all experts, I've been tumbling up a storm – both tumblers running on course grit. And running. And being cleaned out, the stones washed and sorted as to which are ready for the next step (a few, on can lid), which have areas that will take forever to tumble smooth or catch grit and need a bit of help either from the trim saw or the grinder (a good handful or two, in the can), and which go back in the tumbler (the vast majority), and running some more.



As the course grit rounds up the stones, they get smaller (and the ground-away part turns into this yummy grey gunk), so the volume drops. So you add more stones, and more grit, and now I see why Bob said you'll probably run through several course loads before you get a load ready to run on medium grit. I haven't got there yet. I also see why he said you run through about 5 times as much course grit as anything else – indeed, between the two tumblers, I've run through about 2-1/2 pounds of course grit, and plan to order LOTS more when we put together the club order.

So I will keep on tumbling, and hope to work my way up to a full load ready to go to medium grit someday!

Club Grit Order:

Since we're all now learning to tumble – or at least several of us are – and since tumbling takes grit, and the only grit we can get locally is in those cute little “grit kits” that cost a whole lot, we're putting together a large club grit order so we can take advantage of bulk prices.

Figure out how much grit your tumbler needs for a load – or bring it along to the July meeting and we'll help you figure it out – try to decide how much tumbling you think you'll want to do. Then we can add up how much grit each of us wants, and figure out how to get the best price. If we all have some idea how much we'll want by the meeting, we may be able to get the order back by the show.

Field Trip:

Club member Ed is planning a Field Trip to North Carolina, mostly to the MAGMA (Mountain Area Gem and Mineral Association, <http://www.wncrocks.com/magma/magma.htm>) annual Rockhound Roundup, with a few stops on the way. Unless something changes, this is the plan:

“This trip is planned for Sunday July 30th to August 6th to North Carolina and will cover the following collecting areas:

The 31st I want to collect again at the Poovy garnet mine. If I can't get in, then the Tweedy garnet mine (both in Burke County, North Carolina). On the 31st I would like to go to the Crabtree Emerald mine.

On Aug.1st I will travel to the property of Rick and set up a camp site for the Roundup that starts on the 2nd.

Wednesday the 2nd: Little Pine Garnet Mine (\$10 fee)

Thursday the 3rd: Two separate fieldtrips will be held, one led by M.A.G.M.A. member Steve Barr will be to the Diamond Hill Mine in Antreville S.C., cost is \$15.00 per person, the second trip will be to the Gap Creek agate location in Greenville Co. S.C., about 45 minutes from Asheville, this trip will be led by M.A.G.M.A. member Ron Seaver, no fee for the Gap Creek trip. The Diamond Hill trip will depart at 8:00 a.m., the Gap Creek trip will depart at 9:00 a.m.

Friday the 4th: There will be two groups Friday, one will visit a local mine to collect, the other group will visit the Grassy Creek Gem and Mineral Show in Spruce Pine.

Saturday the 5th: the day will be spent at the Roundup, we will have a rockswap, rock show and tell, (bring your favorite specimen to share), geode cracking, wirewrap demonstrations from some of our talented members, chain making, etc., huge cookout to start at 2:00 p.m.

Cost: There will be a \$5.00 per person admission to the Roundup to offset the cost of Porta Johns, Food, etc. The \$5.00 admission covers all five days of the Roundup!

Camping is free.”

Ed says he has room for three passengers in his minivan, and the more people who go, the smaller the split on gas cost, which unless prices change much will be in the neighborhood of \$200. Call him at 868-1514 if you are interested.

Rockhound TV This Month:

PBS: Niagara Falls. A chronicle of Niagara Falls includes archival footage of the daredevils who tried various stunts in and over the cascading water. Mariette Hartley narrates. July 5, 8:00PM; July 8, 4:00PM.

Discovery Channel: Prehistoric Sharks. A menacing predator the size of a Greyhound bus roamed Earth's ancient oceans making meals of whales. This "megatooth" is believed to weigh 20 times more than a large great white today. June 29, 8:00PM, 12:00AM. **Jurassic Shark.** Travel to prehistoric times

to trace the shark's evolution. Fossils reveal a world of strange creatures with brush-like appendages, circular tooth saws and wings. Scientists combine history with current study of shark species for the complete story. June 29, 9:00PM, 1:00AM. **Triassic Giant.** Ichthyosaurs were swimming, air breathing creatures that resembled whales and dolphins. A team excavates the giant fossil from a riverbank in British Columbia that is believed to be the largest Triassic ichthyosaur ever found. June 29, 10:00PM, 2:00AM. **Megaquake.** Earthquake preparation has become a normal part of life for West Coast residents. But scientists believe a quake far stronger than ever before may be on the way. The "megathrust" quake could unleash volcano eruptions, landslides and tsunamis. July 16, 8:00PM, 12:00AM; July 29, 1:00PM. **America's Tsunami: Are We Next?** On December 26, 2004 the world's deadliest Tsunami hit the coast of Thailand. Now a team of leading scientists investigates what happened as they search for clues to discover if this massive wave will strike the same place twice or hit closer to home. July 29, 11:00AM. **Mount St. Helen's: Forecast for Disaster.** Scientists are using new robotic probes to monitor the core of Mount St. Helen's. Over the past several months the volcano has emitted smoke plumes and spewed molten lava. With the probes scientists hope to predict the next eruption before it strikes. July 29, 8:00PM, 12:00AM.

TLC: Nothing rock-related this month.

Travel Channel: Yellowstone: America's First National Park. Host to half of earth's geothermal wonders, this rugged wilderness ignites the imagination. Get a ringside seat for the gushing geysers, explore bubbling mud pots, thundering waterfalls, a huge canyon, and the largest high altitude lake on the continent. July 4, 9:00AM; July 5, 2:00AM; July 23, 6:00PM. **Grand Canyon: Nature's Great Escape.** Head beyond the mule rides and hiking trails to the Grand Canyon's hidden treasures. Meet the team specialized in rescuing "fallers", wander the ghost towns of nearby abandoned gold mines, and find the secret path that leads into a forest of Joshua trees. July 4, 10:00AM; July 18, 7:00PM, 2:00AM; July 29, 3:00PM. **Secrets of Gold.** The glitter of gold defines prized works of art, ornaments of royalty and coinage, as well as tools and devices essential to modern life. Explore fascinating stories and remarkable properties that make gold the most coveted of precious metals. July 8, 3:00PM. **Gold Struck.** With the right tools and a little luck, the average Joe can still strike it rich. Trek through the Australian outback, the wild hills of South Africa, and the urban markets of Istanbul and New York in search of the world's most precious metal. July 9, 1:00PM. **Top Ten Natural Wonders of the World.** Take an exhilarating look at the world's best natural wonders, including the planet's most recognizable waterfalls, mountains and canyons. Learn how these structures were formed and discover the wildlife that lives around them. July 16, 3:00PM; July 17, 5:00PM. **Secrets of Denali National Park.** Visit Alaska's most famous National Park, Denali, a remote wilderness of unspoiled beauty. This remarkably diverse terrain is set amid the Alaskan Range. Rising above it all is Mt. McKinley, the tallest mountain in North America. July 16, 5:00PM; July 18, 6:00PM; July 28, 10:00AM. **Alaska Wide Open.** Alaska is the largest state in the union, and the most extreme. For centuries, people have braved the elements in search of beauty, isolation and riches. From finding gold to traversing the land via dog sled, Alaska's treasures are revealed. July 16, 7:00PM, 2:00AM. **Alaskan Wild.** Alaska is one of the few true wildernesses left on earth. Aerial photography highlights the snowcapped mountains, wide open spaces and glaciers that punctuate the vast and unforgiving landscape. July 16, 8:00PM, 11:00PM; July 20, 9:00PM, 12:00AM; July 31, 5:00PM. **Earth's Natural Wonders – 1.** Explore the world's most awe-inspiring natural wonders. Second in length to the Nile, the Amazon River is 60 times greater in volume of water. The ocean of sand known as the Sahara is the largest desert, and Angel Falls is the tallest waterfall. July 17, 6:00PM. **Earth's Natural Wonders – 2.** Explore the powerful Niagara Falls and Australia's Great Barrier Reef. Visit the Grand Canyon, the world's finest example of water erosion, and then climb the highest mountain peak, Mt. Everest, which grows higher each year. July 17, 7:00PM, 2:00AM. **Secrets of Zion & Bryce.** In Southwestern Utah, two of America's National Parks are spectacularly different yet equally awe-inspiring. Experience the mysterious labyrinths of twisted rock and the highest sheer cliff walls in North America. July 18, 5:00PM; July 23, 2:00PM. **Hidden Yosemite.** To discover the true beauty of Yosemite, trek by llama and mule to remote locations not mentioned in the guidebooks. Discover the secrets to ice climbing, snow camping and snow shoeing, and make reservations for a traditional Christmas dinner. July 23, 3:00PM. **Best of the National Parks.** Each year, millions of people are amazed by majestic vistas, geysers, smoldering volcanoes and rugged country where wildlife roam free. Visit the most spectacular places and open spaces in North America, from Yosemite to the Everglades. July 23, 4:00PM; July 26, 10:00AM. **World's Best Lost Treasures.** Grab a shovel and a sense of adventure and head out to unearth the world's lost treasures! From shipwreck loot sunk into the sand to the greatest unsolved heists in history, join professional treasure hunters hot on the trail. July 23, 7:00PM, 2:00AM; July 29, 6:00PM. **America's Best Places to find Cash and Treasures.** In Arkansas, diamonds can be found on the eroded surface of a volcanic pipe. Sports cars and jewelry are on the block

at the Department of the Treasury's auction in Los Angeles; and in Key West, a company combs the sea bottom for sunken treasure. July 23, 8:00PM, 11:00PM; July 29, 7:00PM. **America's Best Places to Find Cash & Treasures – 2.** Travel the country in search of hidden riches, from precious emerald digs in North Carolina to gold claims in California. In northern Wisconsin, join the search for John Dillinger's missing suitcase, filled with cash. July 23, 9:00PM, 12:00AM; July 27, 9:00PM, 12:00AM. **America's Best Places to Find Cash & Treasures – 3.** In Beverly Hills, explore exclusive pawnshops where visitors can buy diamonds, Rolls-Royces, and even an Emmy Award for rock bottom prices. Dig for rubies in North Carolina, and in Washington state, hunt for the missing loot of DB Cooper. July 23, 10:00PM, 1:00AM; July 27, 10:00PM, 1:00AM. **Secrets of Alaska's National Parks.** Alaska is one of the few remaining frontiers. Take a scenic expedition from ocean to mountains to tundra to ice, revealing the unparalleled beauty and unforgettable wildlife of this great land. July 25, 10:00AM. **The Colorado: River of Wonders.** The Colorado River offers whitewater adventure and ancient mysteries. From the towering peaks of the Rocky Mountains to the majestic Grand Canyon, six National Parks along its banks enchant visitors with their spectacular scenery and wildlife. July 25, 10:00PM, 1:00AM; July 29, 2:00PM. **Natural Wonders of Hawaii.** From lush tropical jungles to fiery volcanic peaks, no place else on earth offers a more diverse array of natural treasures than the Hawaiian Islands. Experience these spectacular sights up close and uncover the fascinating stories behind them. July 31, 10:00AM.

History Channel: Modern Marvels: Silver Mines. It was called the "mother lode", a deposit of silver so massive that it would produce \$300-million in its first 25 years of operation, establish Nevada as a state, and bankrupt the Union Army in the Civil War. Named after an early investor, we'll see how the Comstock Lode, discovered near Virginia City, proved to be a scientific laboratory from which vast improvements in mining technology and safety were pioneered, including innovations in drilling, ventilation, drainage, and ore processing. July 21, 1:00PM, 7:00PM. **Mega Disasters: Earthquake in the Heartland.** Could a killer earthquake strike America's heartland? If history proves true, the answer is yes. The 1811-1812 New Madrid Earthquakes (centered in southeast Missouri) rank as some of North America's most catastrophic natural disasters. Stretching more than 160 miles, a system of earthquake faults lurks beneath the Mississippi River basin, loaded and ready to erupt. And it's happened before. Pioneer residents of New Madrid, Missouri were thrown from their beds in the early hours of December 16, 1811 when an estimated 8-point earthquake hit. But it wasn't just one event. Multiple shocks were experienced over the next three months--the largest caused the Mississippi to flow backwards. No earthquake sequence has lasted so long, produced so many shocks, nor created such astonishing phenomena on land and water. The New Madrid Fault remains a seismically active area and experts expect a repeat. The only question is when... July 22, 2:00PM. **Mega Disasters: Yellowstone Eruption.** The world's largest, most active volcano system exists in the western US. 6,000 years ago, the Yellowstone Volcano erupted. Lava and pyroclastic flows covered 3,000-square miles with ash 3-feet thick. Fossils discovered as far away as Nebraska were found to have died from inhaling the Yellowstone debris. If--or perhaps we should say when--it erupts again, the Yellowstone "Mega-Volcano" will create a global cataclysm beyond human comprehension. Everything within 150 miles--including the cities of Cody, Wyoming and Bozeman, Montana--will be hit by an 800-degree blast of heat and 200 miles-per-hour winds. Thousands will be killed. That's just the local effects. Half the US will be buried beneath a blanket of volcanic ash. Crops in the Midwest--the world's breadbasket--will be destroyed. And it will take years before crops can grow again. Starvation, epidemics, and social chaos won't be long in coming. July 22, 4:00PM. **Modern Marvels: Diamond Mines.** Half a mile below the earth's surface, men mine for rough diamonds--a pure carbon substance. Brilliant when cut and polished, they are marketed as the most precious gem in the world. From the earliest mines of the 4th century BC to today's technological wonders in South Africa, we explore the history and technology of the diamond mine. July 24, 1:00PM, 7:00PM. **Modern Marvels: World's Biggest Machines 5.** Join us for another look at big machines. At NASA's Ames Research Center, we visit the world's biggest wind tunnel, part of the National Full-Scale Aerodynamics Complex, and one of the biggest and most complex flight simulators, NASA's Vertical Motion Simulator, or VMS. At the Joy Mining Machinery plant in Franklin, Pennsylvania, giant machine tools form, cut, and measure the enormous individual parts that make up a Continuous Miner, the biggest underground mining machine in the world. But big machines aren't limited to science and commerce. Ride with us on the biggest observation wheel in the world, the London Eye, which stands 443 feet high and provides a 360 degree unobstructed view of London. And we take a look at IMAX technology. The film, cameras, projectors, and theater screens are the largest in the world. Finally, we take a ride on every lawn tender's dream machine--the Claas Cougar, the world's biggest lawnmower. July 26, 10:00PM, 2:00AM. **Modern Marvels: World's Biggest Machines 4.** From a giant machine press that stamps out an entire car body to a 125-ton chainsaw that cuts through the world's hardest rock; from a huge telescope that glimpses the ends of the known universe to the world's largest rock crusher. Join us for a workout of the world's largest machines, and take a long look through the lens of the world's biggest

optical telescope, the Keck Observatory, atop 13,800-foot Mauna Kea in Hawaii. July 27, 8:00PM, 12:00AM. **Modern Marvels: Metal.** They constitute the very essence of the modern world; the cadence of our progress sounds in the measured ring of the blacksmith's hammer. From soaring skyscrapers and sturdy bridges to jet planes and rockets, metals play a key role. Our journey begins before the Bronze Age and takes us into the shiny future when new metal structures--engineered at a molecular level to be stronger, lighter, and cheaper--shape human progress, as they have since man first thrust copper into a fire and forged a tool. July 29, 12:00PM. **Modern Marvels: Glue.** It's Super! It's Crazy! And it can be found in everything from carpet to computers, books to boats, shoes to the Space Shuttle. It's even used in surgery! Without it, our material world would simply fall apart. In this episode, we'll visit the stuck-up, tacky world of glue. Glue's sticky trajectory spans human history and we'll cover it all--from Neolithic cave dwellers who used animal glue to decorate ceremonial skulls to modern everyday glues and their uses, including Elmer's glue, 3M's masking and Scotch tape, and the super glues. Remember the Crazy Glue commercial in which a man held himself suspended from a hard hat that had just been glued to a beam? Well, that 1970s vintage ad understates the power of glue. With the help of a crane, we're going to hoist a 6,000-pound pickup truck off the ground by a steel joint that's been bonded with glue! July 31, 1:00PM, 7:00PM.

Upcoming Shows in the area:

July 8-9, Syracuse, NY - 40th annual show and sale, "Ruby Red Wonders"; Gem & Mineral Society of Syracuse; New York State Fairgrounds, Verizon Center of Progress Bldg., I-690 Exit 7; Sat. 10-6, Sun. 10-4; adults \$5, children under 12 free; 41 dealers, 10 wholesalers, educational exhibits, kids' fun things, door and show prizes; contact Lou Budell, (315) 673-1891; or Web site: www.gmss.us.

July 15-16, Erie, PA - 37th Annual Gem & Mineral Show; Gem City Rock & Mineral Club. Perry Hi-way Hose Co., 8270 Peach St; Erie, PA. Sat. 10-6, Sun. 10-5; adults \$2.50, seniors \$1.50, children free; contact Bob Gallivan, (814) 454-6770.

Aug. 26-27, State College, PA - Nittany Mineralogical Society. Mt. Nittany Middle School, 656 Brandywine Dr.; Sat. 10-6, Sun. 11-5; adults \$5, children under 10 free. Bernie Pisarchick, 814-265-8887, bernie@lodins.com, www.lodins.com.

Sept. 8-10, Toledo, OH - Toledo Gem & Rockhound Club. 35th Annual Jewelry, Gem, and Mineral Show. Stranahan Theater Complex, 4645 Heatherdowns Blvd. Fri., 2-9; Sat., 10-6; Sun., 10-5; dealers, jewelry, beads, gem trees, faceted stones, mineral specimens, fossils, cabochons, tools, carvings, silent auction, children's games, activities, free specimens, demonstrations, jewelry making, lapidary, gem faceting, bead making; adults \$3.50, seniors (55+) \$2.50 with ID, children under 12 with an adult and scouts in uniform free; contact TGRC, 419-531-8124, www.toledogemandrockhoundclub.com.

Sept. 22-24, Berea, OH - GemStreet USA. Gem, Mineral, Jewelry, Fossil, and Bead Show. Cuyahoga County Fairgrounds, 164 Eastland Rd. Fri., 11-7; Sat., 10-6; Sun., 11-5; rough and faceted minerals, gemstones, fine gold and silver jewelry, wire-wrapped jewelry, precious beads, seed beads, beading supplies, books, silver findings, amber, fossils, door prizes; Strieter Productions, Inc., Jane Strieter Smith, Strieter Productions Inc., P.O. Box 770680, Lakewood, OH 44107; 216-521-GEMS, spi@stratos.net; www.gemstreetusa.com.

Of course, as always, if you're planning to travel, check out the complete online listings at the Rock and Gem Magazine Calendar (<http://www.rockngem.com/showdates/showdates.shtml>), and the Lapidary Journal Calendar (<http://www.lapidaryjournal.com/cal1.cfm>). While 90% or better of these listings are exactly the same, if you only check one, you could miss one in the 10% that *aren't* in both that's just the one you wanted!

We have been down in the club room many Saturday mornings (which sometimes extend to 2:00-3:00PM), but **check the club web site** at www.treebeard.net/gemcity or call and find out if you would like to join us for any *particular* Saturday. The web site is usually updated with a 'definite' status Friday night or early Saturday morning -- or call me (Harriet) at 455-4851 or Bob Gallivan at 454-6770 to make sure. You can also call to arrange another time for a work session if Saturdays aren't good for you, and someone will try to accommodate you.