



The PRESQUE ISLE PROSPECTOR

Official Publication of the Gem City Rock and Mineral Society of Erie, PA
Monthly Meetings, First Saturday at 9:30 AM

October 2008



Last Month's Meeting:

Last month our meeting was the Club Picnic, which we went ahead and had out on Presque Isle since it looked like the morning's scattered showers should clear up by about noon. In fact, it cleared up closer to 3:00, as we were all packed up and driving home, when the sun broke out to taunt us! But we had some cover, and we didn't get very wet, and we still had good food and good friends. And a bit of show-and-tell by those who came home from the Herkimer trip with nifty finds and lots of enthusiasm to go again!

This Month's Meeting:

This month our meeting will be the Saturday, October 4th, at 9:30 AM, at the club room at the Renaissance Centre building at 1001 State Street (southeast corner of 10th and State Streets).

Our program will be planning out our Fall Project, so we can put together an order for any parts we still need. Then in November, we'll put them together. See the article on the project below, for **what you will need to bring with you to the meeting** if you want to make something.

Gem City Pebble Pups:

The Pebble Pups are back! The first Fall meeting of the Pebble Pups will be October 4th at 11:00AM at the club rooms. The topic will be crystal properties. We will be looking a various crystals to check out these properties. If you have a crystal, bring it along!

Federation News:

The American Federation Newsletter at http://www.amfed.org/news/n2008_10.pdf, has another article on the Paleo bill, which will probably come up to vote before the end of the year. Since the Club already sent a letter to our Congressional Representatives last Spring, we won't do this again; but individual club members may, and this article has a letter written by a professional geologist to *his* rep which might give you an idea of points to make to *your* rep. There is also an article on the updating that has been done over recent months to the Kid's Corner on the AFMS web site. If you've never looked, check it out at <http://www.amfed.org/kids.htm>.

The Eastern Federation Newsletter is online at <http://www.amfed.org/efmls/efoct08.pdf> and they thought the article on the Paleo bill was important enough to include it again in the Regional newsletter too. The Safety article suggests a mentoring program for new members, so that an experienced member can not only explain safe procedures – be they for collecting or for lapidary equipment use or whatever – but would then work alongside to see that the safety procedures are understood and followed. We might try to remember to do this a little less informally than we have been. The Junior Activity article is on adapting games to use rock-and mineral-oriented questions and answers – specifically, the author was involved in a game of “Apples to Apples” that had been changed to “Crystals to Crystals” but many other question-type games could also be modified. The Eastern Federation Librarian is working to convert all

Club Web Site address:

		www.gemcityrockclub.org		
President	Kirk McFadden	10535 Bowmantown Rd.	Cranesville PA 16410-9739	(814) 802-5225
Vice-president	Sarah Boesch	1223 Lake St.	Lake City PA 16423-1808	(814) 774-4234
Secretary	Harriet Beckman	1120 W. 41st St.	Erie PA 16509-1302	(814) 868-8422
Treasurer	Val Engelleiter	132 Moorehead St.	Erie PA 16508-1859	(814) 454-1771
Newsletter Editor	Harriet Beckman	email:	editor@gemcityrockclub.org	(814) 868-8422
Board Members:	Robert Gallivan			Mary Thomson
				Ted Oslak

the programs currently available on VHS to DVDs, both for ease of use and for durability, starting with the recordings of the Rochester Mineralogical Symposium programs. The listing of what is available in the EFMLS Library is printed in the annual directory that comes to me as club secretary, so if you want to look at it to see what programs we might get, just let me know. There is also a Wildares 2008 wrap-up, with lots of photos of people making and the stuff they made, as well as just folks having a really good time together. Check it out – they will be announcing the Wildacres 2009 sessions and classes soon, and probably start registration after January 1st – so start dreaming and planning now!

Fall Club Project:

People still seem to be a bit confused as to the fall project – what it is, and what they need to get / do for it. So I'll try to spell it out, as exactly as I can, considering.

Last spring, when we were choosing a project, I came to the meeting with maybe a dozen pictures of potential projects for the fall. Some were wire-wrapping, some beading, but mostly they were somewhere in between, or both – just basic jewelry components (beads, cabs, charms), put together with basic findings, and requiring basic skills. Since those of us at the meeting (actually I think we discussed it over two meetings) all liked something different (different designs, different components), but what we would need to learn to make them all – put them together – was very much the same, we decided to just call the project “Basic Assembly of Jewelry Components.”

I've tried to put a couple of pictures to display this idea in each of the past several newsletters, but apparently only those of us who were in on the decision really understand what we meant; so I'm thinking maybe you just need many pictures together to get the concept. So, the idea is to find a picture of something **you'd** like to put together, and then get the stuff to do that. We don't want to get into complex wire-wrapping, but many things require a basic wrapped loop to turn a bead into a jewelry component, ready to be linked to something else. We won't be doing any soldering, but we'll show you how to link up earwires to drops and dangles to make earrings; how to attach clasps and string together beads and attach charms to bracelets.

But first you need a project you want to make. You need to find a picture, or a piece you want to re-create, using your own materials and with your own twist.

I have mentioned looking at the gallery of designs at Fire Mountain Gems & Beads (<http://www.firemountaingems.com/galleryofdesigns/default.asp>) since they not only show you lots of designs, but most of them give you a materials list of what you need to make them – so this is a good place to start. Of course, they have hundreds of designs in a dozen or more categories, but many of them will go beyond the scope of what we can put together in a session or two – but here are several ideas from Fire Mountain:



There are lots of other web sites with design ideas – these are random pictures I've collected of things that interest me, either as something to re-create or just to use some aspect of the design:



And there are plenty of other places to look for inspiration, too; these are some ideas I've seen in various books from the library on jewelry making, that I wanted to remember:



There are many other places to look for inspiration – catalogs, stores, your jewelry box, etc. – for things you'd like to use as a basis for your piece. You can also start with a favorite stone or two – beads, pendants, cabs or whatever – and see what kind of design you can adapt for it.

But the important thing is that **you need to have a design in mind and preferably a picture** or at least a sketch **to bring along to the meeting**, so we can determine what all you will need in order to put it together. If you don't have much experience making jewelry, it would be helpful to have more than one design in mind in case one turns out to be rather more involved than we are prepared for this time.

You also need to **bring along all the components you already have**, to make your design. Then, we can figure out what other things you will need, so that we can put together an order for it so you'll have everything for the November meeting, and can start assembling!

Possible Class with Mel Ward:

Mel Ward, who has come to our Show and our Picnic several times and has presented a club program once (with less than perfect results), has offered to teach a class at **his** place, in his workshop, with his tools, so he knows everything should work properly. He has also said this would be for no more than 4 people at a time (so that there's enough equipment to go around and he can give more individual attention), and be more of a day-long session than a few hours (so we're really likely to finish it!). We would also learn his method of cutting cabs, which is not the standard way – then we can have a choice of whatever method we like.

So far, a few people have expressed interest, but we haven't gotten as far as firm plans and setting a date. If you are interested, please call me at 868-8422 and I'll try to coordinate or give you the info to coordinate yourselves.

Trip Report:

I forgot to ask for a trip report or photos from those who went on the Herkimer trip in time to get it for this newsletter, so maybe next month. So instead, I'll give you all just enough to make you really jealous of the few hours I got to spend at the Met in NYC last month, looking at the "**Art of the Royal Court: Treasures in Pietre Dure from the Palaces of Europe**" – a special exhibit that I wished I could have spent days, not hours, pouring over!

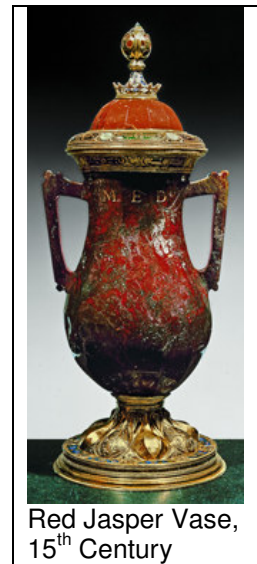
From the exhibit web site

(http://www.metmuseum.org/special/pietre_dure/more.asp):



Tabletop, Allegory of Water, 1761

"Renaissance masters working in Rome cut colored marbles and laid them in geometrically patterned tabletops, such as the celebrated Farnese Table in The Metropolitan Museum of Art, while Milanese artisans preferred to cut designs in rock crystal, lapis lazuli, and other precious materials. In Florence, the passion of the Medici for importing precious stones led to Ferdinando I de' Medici's founding of the court workshops that still survive as the Opificio delle Pietre



Red Jasper Vase, 15th Century

Dure. Royal patronage encouraged Florentine craftsmen to migrate to Prague, and their practices gradually spread to such centers as Augsburg, Paris, Madrid, and St. Petersburg. Some 150 tables, cabinets, caskets, jewelry, vases, and sculptures represent the range of this extraordinary art form cultivated by the courts of Europe through four centuries."

Check out the 23 pictures and descriptions on the web site! Also, while I didn't carry home any Pietre Dure, I did buy 2 *large, heavy* art books they were selling at the exhibit, which I'll bring in for show-and-tell, as well as the one small, slightly less extravagant, piece I do have.

Upcoming Shows in the area:

The fall show season is ramping up, and there are a few within daytrip range if you want to shop for more components for the Fall Project, or for more stuff to make Christmas presents once you've had some experience putting a couple of things together:

Oct. 11-12--Worthington, Pennsylvania: Show; Kit-Han-Ne Rock & Gem Club; West Franklin Firehall, corner of Cherry and Linton St.; Sat. 10-6, Sun. 10-5; six vendors, silent auction, displays, Gem Mine for young and old, Plinko for kids; contact Albert Zabinski, (724) 567-7067; e-mail: zabinski@facetersco-op.com ; Web site: www.facetersco-op.com/zabinski/gemshow.htm .

Oct. 25-26--Cuyahoga Falls, Ohio: Show, "Gemboree"; Summit Lapidary Club, Akron Mineral Society; Emidio & Sons Expo Center, 48 E. Bath Rd.; Sat. 10-7, Sun. 10-6; minerals, rocks, gems, jewelry; contact Warren Salchak, (330) 929-3798, or Carl Miller, (330) 633-4250; Web site: www.LapidaryClubofOhio.org .

Oct. 26 -- Columbus, OH: Ayla's Wonderful World of Beads. Bead Bazaar, Fawcett Hotel and Conference Center, 2400 Olentangy River Rd. 10 a.m.-5 p.m. Price of admission is \$3.00. Receive \$1.00 off with Admission Coupon. www.awwbshow.com.

Nov. 14-16--Hamburg, New York: Show and sale, "Gemstreet USA"; Strieter Productions Inc.; Erie County Fairgrounds, 5600 McKinley Pkwy.; Fri. 10-6, Sat. 10-6, Sun. 11-5; adults \$7 (three days), seniors and students \$5 (three days), children under 12 free; minerals, fossils, hourly door prizes; contact Jane Strieter Smith, P.O. Box 770680, Lakewood, OH 44107, (216) 521-4367; e-mail: janestrietersmith@ohiocoxmail.com ; Web site: www.gemstreetusa.com .

If you're planning to travel, check out the complete online listings at the Lapidary Journal Calendar (<http://www.lapidaryjournal.com/cal1.cfm>), and especially the Rock and Gem Magazine Calendar (<http://www.rockngem.com/showdates/showdates.shtml>).

Our Work Sessions on Saturdays will mostly be finding and setting up stuff in the new clubroom. Check the club web site or call me (Harriet) at 868-8422 or Bob Gallivan at 454-6770 to find out about any specific Saturday.